



FOLKESTONE & HYTHE DISTRICT
**COMMUNITY SAFETY
PARTNERSHIP**

Folkestone & Hythe Community Safety Partnership and Unit (CSU) works together to drive multi-agency practices to achieve the best outcomes for the community.

Our Community Safety Partnership consists of 6 statutory partners

- Folkestone & Hythe District Council (Lead)
 - Kent Police
 - Kent Fire & Rescue Service
 - Probation
 - KCC
 - NHS

As well as over 25 other key agencies who form the CSU



FOLKESTONE & HYTHE DISTRICT
COMMUNITY SAFETY
PARTNERSHIP



Kent Fire &
Rescue Service



Kent
Police

National
Probation
Service



NHS
South Kent Coast
Clinical Commissioning Group

A Strategic Assessment is compiled annually to show progress for the Partnership against its current priorities, along with identifying emerging issues, and recommended priorities for the next 12 months. The priorities for 2020/2021 for the CSP were selected by members of the Partnership, taking into account the findings from the strategic assessment. A series of cross cutting themes have also been identified which are key initiatives that will support the delivery of all of the priorities.

		2020/2021 Priorities		
		Safeguarding & Supporting Vulnerable People	Crime & Community resilience	Community Safety
Themes		<ul style="list-style-type: none"> • Modern Slavery & Human Trafficking • Domestic Abuse • Mental Health • Missing Children • District contextual safeguarding – Children • District vulnerabilities partnership – Adults • Youth Diversion 	<ul style="list-style-type: none"> • Modern Slavery & Human Trafficking • Cuckooing • Gangs County Lines • Criminal Exploitation • Fraud • Financial and acquisitive crime • Drug dealing • IOM/VISOR • Hate/Mate crime • Violence reduction • Serious and organised crime (SOC) • Organised crime groups (OCGs) 	<ul style="list-style-type: none"> • Anti-Social Behaviour • Public Spaces Protection Order • Environmental Crime • Town centres • Public Realm • Licensing • Events • Hotspot locations • Substance misuse • Diversionary activities • Housing • Homeless • High Risk Adults & Young People • Unauthorised Encampments
	Cross Cutting Themes	Violence Reduction		Reducing Offending

Folkestone & Hythe CSP/CSU



Community Safety Unit

Bringing together a number of statutory and non statutory public bodies to deliver a service which through joint working reduces anti-social behaviour, crime, disorder and reduces reoffending and substance misuse through early intervention and co-ordinated support, as well as creating a welcoming safe place to live.

Targeted interventions and ASB legislation

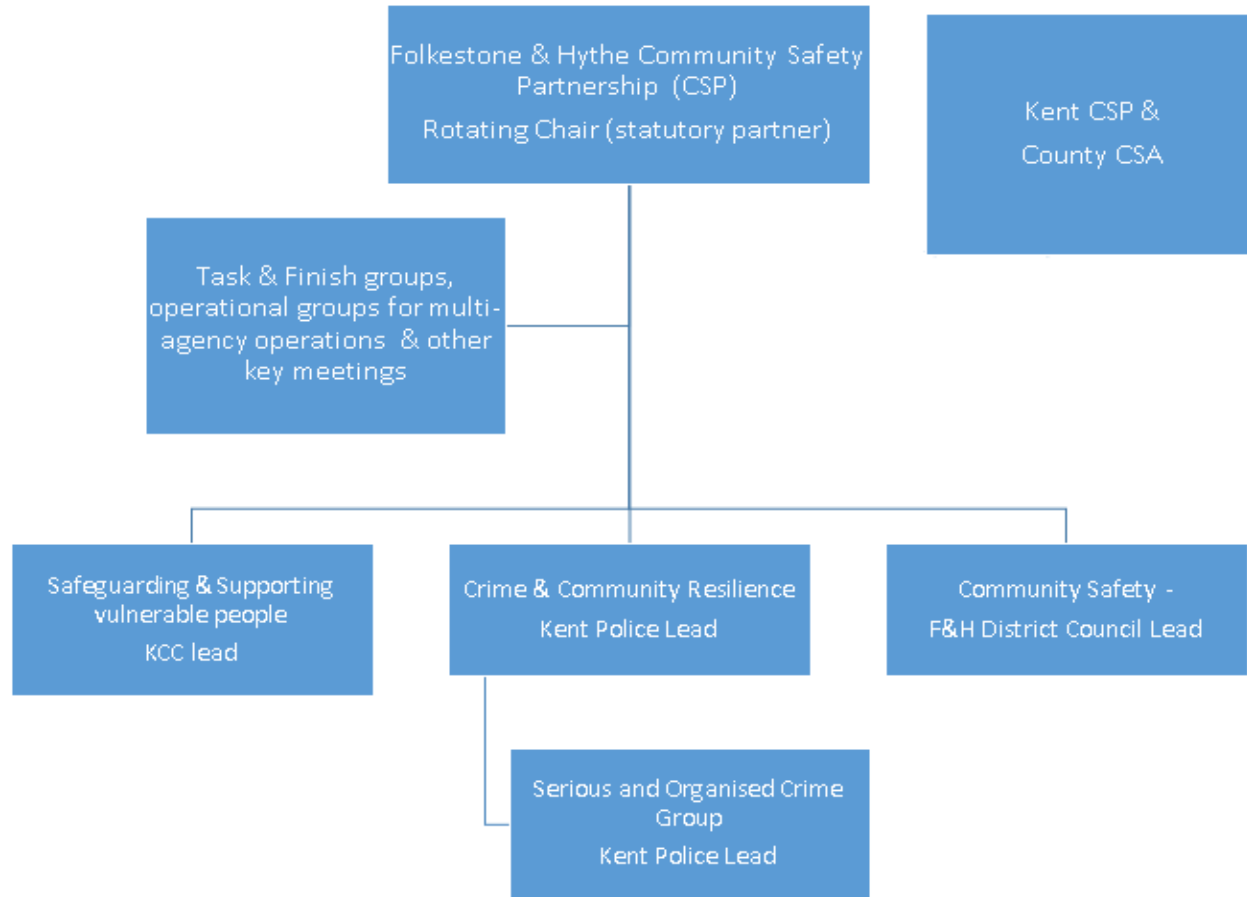
Weekly CSU meetings



Multi-agency operations & key projects



FOLKESTONE & HYTHE COMMUNITY SAFETY PARTNERSHIP STRUCTURE 2020



POLICE & CRIME COMMISSIONER FUNDED PROJECTS 2019/2020

The CSP receive £31,744 for financial year 2020 - 2021. Funding is pass-ported through the Police and Crime Commissioner's budget. This funding is being used for a number of partnership projects as listed below to help address the CSPs priorities.

To summarise, the grant is approved currently to the total of £24,225.00 which leaves a tactical pot of £7,518.85 for reactive spends throughout the rest of 2020/2021

Project Title	Organisation	CSP Priority	PCC Priority
One Stop Shop	Homestart	Safeguarding and Supporting Vulnerable People	Support Victims of Crime and abuse
Youth Safeguarding Bi-Annual Conference	F&H Community Safety Partnership - CSU	Crime & Community Resilience Safeguarding and Supporting Vulnerable People Community Safety Violence reduction and reoffending	Tackle abuse, exploitation, violence, organised crime and gangs
Kent CDAP	Community Domestic Abuse Programme (CDAP)	Safeguarding & Supporting Vulnerable People	Invest in schemes that make offenders pay for the harm they have caused.
OP Ring bell	Folkestone & Hythe CSP Crime and Community Resilience sub group	Crime and Community Resilience Community Safety	Fight crime, ASB & reduce re-offending
Urban Pastors	Cheriton Baptist Church	Safeguarding & Supporting vulnerable people Crime and Community Resilience Community Safety Violence reduction and re-offending	Invest in schemes that make communities feel safer and support the engagement of residents
Shepway Youth Hub	Folkestone Detached Youth Project	Safeguarding & Supporting vulnerable people Crime and Community Resilience Community Safety Violence reduction and re-offending	Tackle abuse, exploitation, violence, organised crime and gangs
Homestart DA Service	Children & Me	Safeguarding and Supporting Vulnerable People	Support victims of crime and abuse
Aspire Outreach	Global Generation Church	Safeguarding & Supporting vulnerable people	Support initiatives that reduce pressure on policing due to mental health